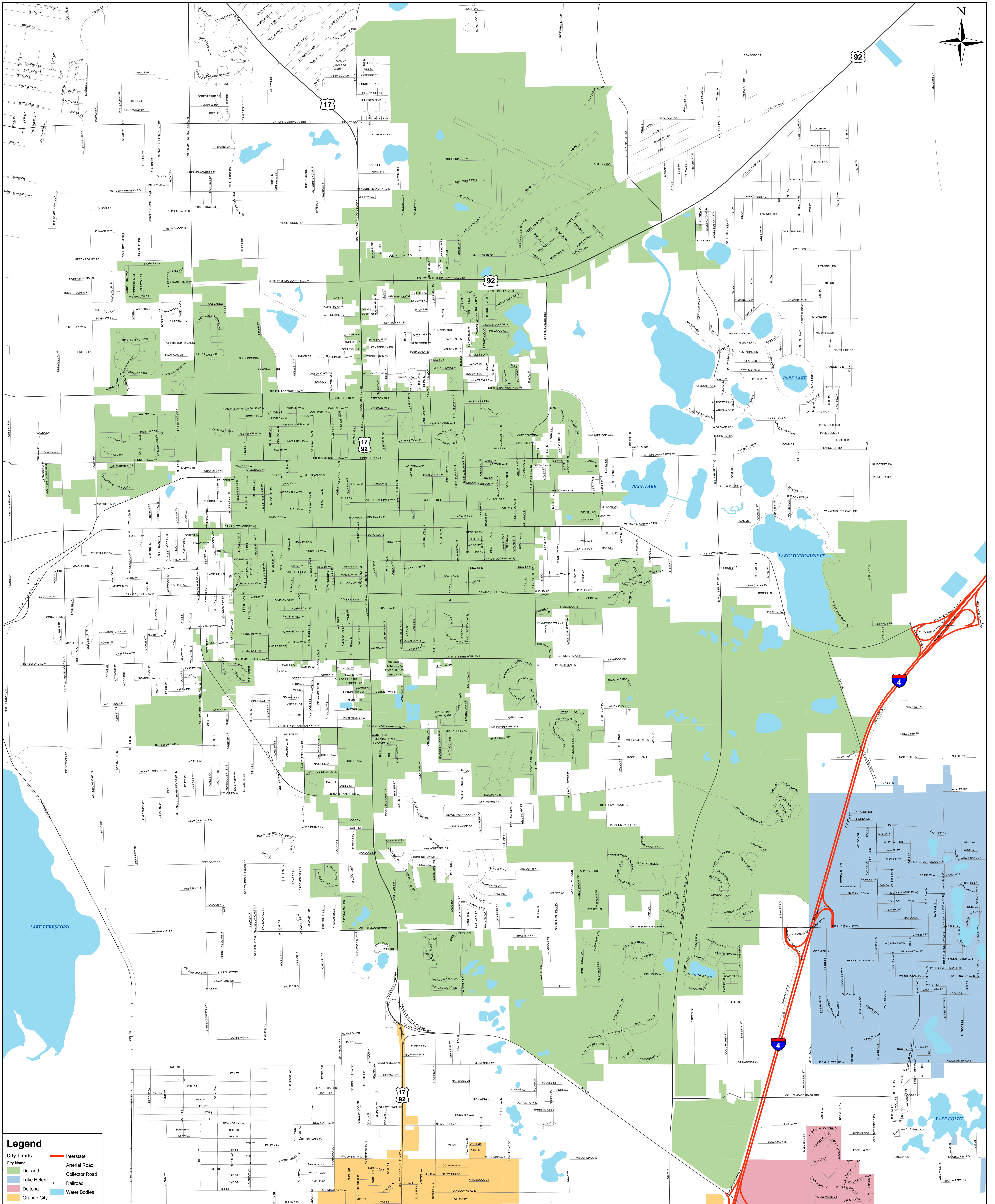


CITY OF DELAND

City Limits



Legend

- City Limits (Green shaded area)
- City Name (Blue shaded area)
- DeLand (Blue shaded area)
- Deltona (Pink shaded area)
- Orange City (Orange shaded area)
- Interstate (Red line with shield)
- Arterial Road (Thick black line)
- Collector Road (Thin black line)
- Lake Helen (Blue shaded area)
- Railroad (Black line with cross-ticks)
- Water Bodies (Light blue area)

Source: Volusia County GIS
 This map is a graphic representation and is not intended to be used for any engineering or surveying purposes. The City of Deland is not liable for any inaccuracies shown on the basis of this map or on the information contained herein.
 Prepared by: City of Deland Planning Dept.
 August 25, 2010
 V:\Plan\GIS\deland_city_limits.mxd

Scale: 1:15,000
 1 inch = 1,250 feet

